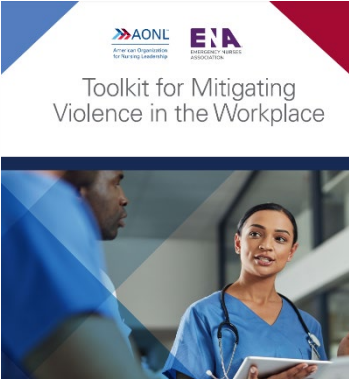


Safe & Sound Campaign

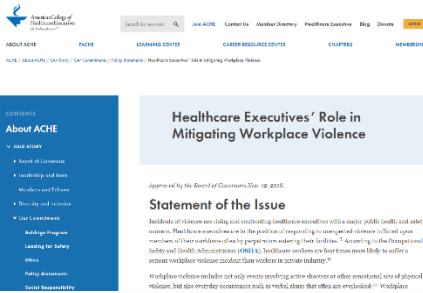
STAFF RESOURCES



[Toolkit for Mitigating Violence in the Workplace | AONL](#)

This toolkit provides nurse leaders with resources that support the following six steps to mitigate violence in the workplace.

- STEP 1 Understand workplace violence.
- STEP 2 Create a culture of nonviolence.
- STEP 3 Assess and mitigate risk factors.
- STEP 4 Develop a workplace violence prevention program.
- STEP 5 Continuously train and deploy staff.
- STEP 6 Evaluate and measure impact.



[Healthcare Executives' Role in Mitigating Workplace Violence | American College of Healthcare Executives](#)

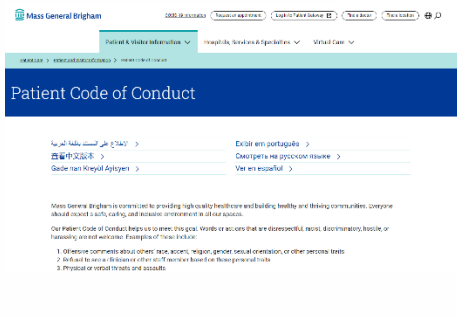
This document lays out the statement of the issue and policy position approved by the ACHE board of governors in November 2018. The American College of Healthcare Executives believes that health care executives have a professional responsibility to treat and take steps to mitigate violence and to advocate for cultures of safety.



[Developing Healthcare Safety & Violence Prevention Programs Within Hospitals | Massachusetts Health & Hospital Association](#)

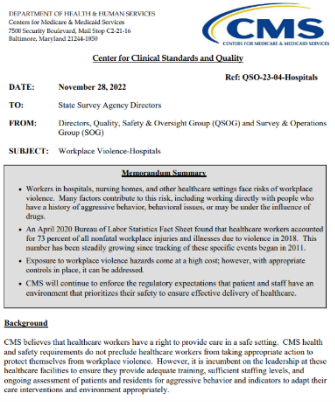
The Massachusetts Health and Hospital Association formed a Workplace Safety and Violence Prevention Workgroup in response to concerns regarding the increased risk of violence in health care settings. The workgroup developed guidance to provide an understanding of the current best practices being used across Massachusetts hospitals, intending to provide a framework for an effective health care violence prevention program.





Patient Code of Conduct | Mass General Brigham

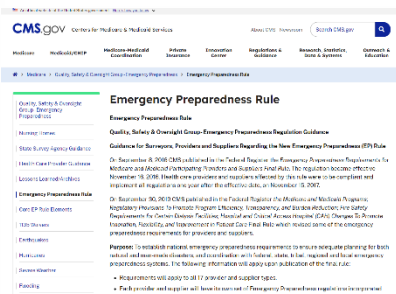
Included in the Massachusetts Health and Hospital Association’s Workplace Safety and Violence Prevention Workgroup was the development of a Patient Code of Conduct - prominently displayed on the institution’s website. This Patient Code of Conduct example also includes an excellent [short explainer video](#).



Center for Clinical Standard and Quality | CMS

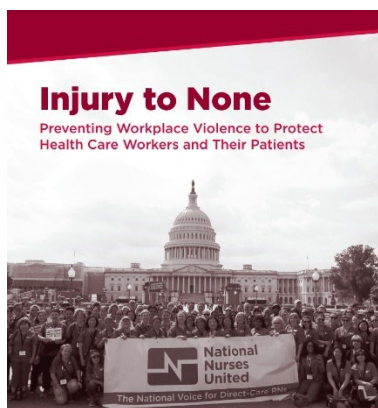
This memorandum outlines the CMS regulatory expectations that patients and staff have an environment that prioritizes their safety to ensure adequate health care delivery.





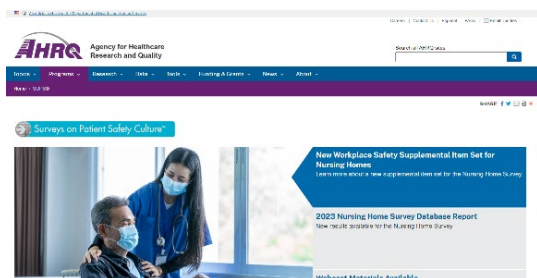
[Emergency Preparedness Rule | CMS](#)

The Emergency Preparedness CoP at §482.15(d)(1) contains requirements for hospitals to train staff and have policies and procedures to protect their workforce and their patients.



[Injury to None Brief | National Nurses United](#)

This brief is a comprehensive overview of workplace violence, including summaries of the leading research on its prevalence, impacts, and prevention, and details of how we are working to stop it.



[Surveys on Patient Safety Culture \(SOPS\) | Agency for Healthcare Research and Quality \(ahrq.gov\)](#)

Learn about the AHRQ Surveys on Patient Safety Culture™ (SOPS®) program and the workplace safety supplemental questions. SOPS surveys ask health care providers and staff about the extent to which their organizational culture supports patient safety.

